

TOWER®

BUILT FOR BETTER SINCE 1912

AQUAJETPRO

SPOT CLEANER

WITH WINDOW CLEANING
ATTACHMENT & EXTENSION POLE

MODEL: T548007



USER MANUAL



GREAT BRITISH DESIGN, INNOVATION AND EXCELLENCE SINCE 1912

TABLE OF CONTENTS

THIS BOX CONTAINS	03
SPECIFICATIONS	03
IMPORTANT SAFETY INFORMATION	04
• Important safety information	04
• Additional battery safety precautions	04
STRUCTURE OF YOUR APPLIANCE	06
BEFORE FIRST USE	07
• Setting up	07
USING YOUR APPLIANCE	08
• Filling the cleaning tank	08
• Installing the Detachable hooks	08
• Installing the hose	08
• Installing attachments	08
• Using the brush attachments	09
• Using the window cleaning attachment	09
CLEANING AND STORAGE	10
• Cleaning the hose	10
• Cleaning the attachments	10
• Cleaning the dirty water tank	10
TROUBLESHOOTING	11
DISPOSAL OF THE UNIT	12
CUSTOMER SUPPORT	12

IMPORTANT SAFETY INFORMATION

IMPORTANT SAFETY INFORMATION

please read these safety notes carefully before using your tower appliance. These warnings have been provided in the interest of safety. Basic safety precautions should always be followed including the following:

GENERAL SAFETY

- Close supervision is necessary when any appliance is used by or near children.
- Children should not play with the appliance.
- This appliance can be used by children aged from 8 years and above and persons with reduced physical, sensory or mental capabilities or lack of experience and knowledge if they have been given supervision or instruction concerning use of the appliance in a safe way and understand the hazards involved.
- Cleaning and user maintenance should not be undertaken by children without supervision.
- Take care when any appliance is used near pets.
- The use of accessory attachments is not recommended by the appliance manufacturer, apart from those supplied with this product.
- Do not place the appliance on or near a hot stove top or heated oven.
- This appliance is for household use only.
- Do not place anything on top of the appliance.
- Do not clean the appliance with metal kitchen utensils, caustic or abrasive cleaning agents or scouring sponges.
- Do not use this appliance for anything other than its intended use.

- This appliance is for household use only and similar applications, such as: staff kitchen areas in shops, offices and other working environments, farm houses, by clients in hotels, motels, and other residential type environments, or by bed and breakfast type environments.
- **DO NOT** handle the plug or the spot cleaner with wet hands.
- **DO NOT** insert any objects into openings in the unit.
- **DO NOT** use the spot cleaner without the roller correctly installed or without water in the water tank.
- **DO NOT** use hot water or chemicals in the water tank. Never put de-scaling, aromatic, alcoholic or detergent products into the spot cleaner, as this may damage it or make it unsafe for use. Stop using the spot cleaner if water leakage is observed and seek advice from the manufacturer or its service agent or a similarly qualified person.

It is important that this instruction manual is retained for future reference. If the appliance is given to someone else, it should always be accompanied by these operating instructions, as they form an integral part of the appliance.

It is important that this instruction manual is retained for future reference.

If the appliance is given to someone else, it should always be accompanied by these operating instructions, as they form an integral part of the appliance.

IMPORTANT SAFETY INFORMATION

BS PLUG WIRING

The wires in the mains lead are coloured in accordance with the following code:

BLUE NEUTRAL
BROWN LIVE
GREEN/YELLOW EARTH

As the colours of the wire in the mains lead of this appliance may not correspond with the colour markings identifying the terminals on your plug, proceed as follows:

As the colours of the wire in the mains lead of this appliance may not correspond with the colour markings identifying the terminals on your plug, proceed as follows:

The wire which is coloured BLUE must be connected to the terminal which is marked with the letter N or coloured black.

The wire which is colored BROWN must be connected to the terminal which is marked with the letter L or coloured red.

The wire which is coloured GREEN/YELLOW must be connected to the terminal which is marked with the letter E or (earth symbol] and is coloured GREEN or GREEN/YELLOW.

WARNING: THIS APPLIANCE MUST BE EARTHED

IF IN DOUBT SPEAK TO A QUALIFIED ELECTRICIAN



THIS BOX CONTAINS

- Instruction Manual
- Main unit
- Dirty water tank
- Clean water tank
- 2 x extension tubes
- Window cleaning attachment
- Small brush
- Large brush
- Hose
- Self cleaning nozzle
- Detachable power cord hook
- Detachable hose hook
- Detachable brush hook

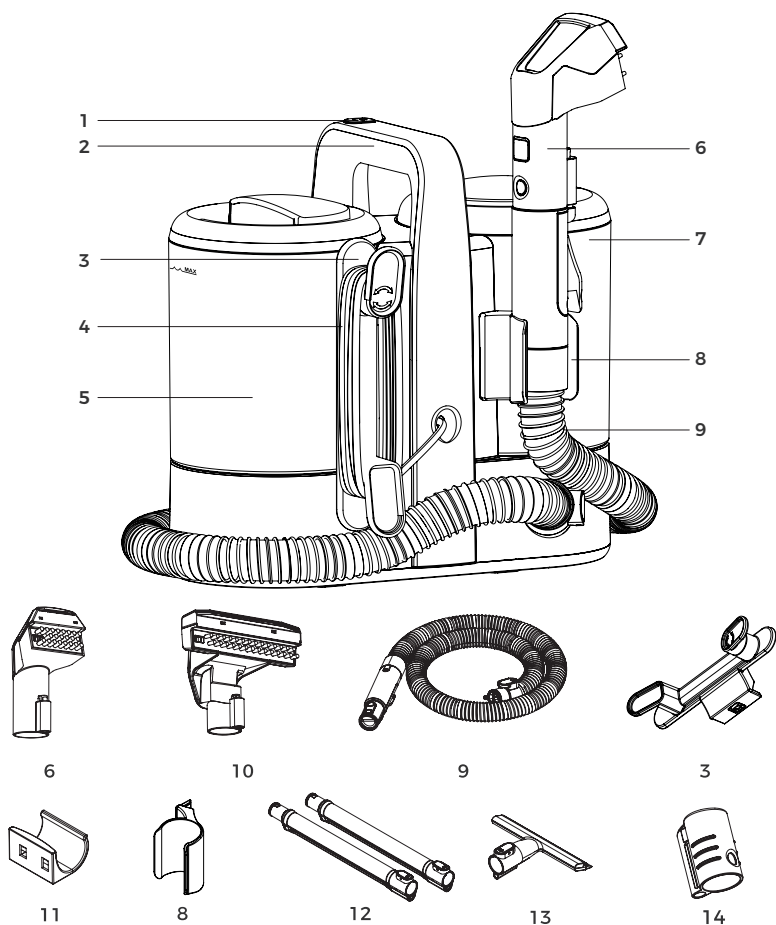


- 1. Small Brush
- 2. Large Brush
- 3. Window Cleaner Attachment
- 4. Extension pole (x2 pieces)
- 5. Self cleaning nozzle

SPECIFICATIONS

MODEL	T548007
RATED VOLTAGE	220-240V
FREQUENCY	50/60Hz
POWER CONSUMPTION	450W
CAPACITY	1500ml (clean) 800ml (dirty)

STRUCTURE OF YOUR APPLIANCE



- 1. On/Off button
- 2. Carry handle
- 3. Detachable power cord hook
- 4. Power cord
- 5. Clean water tank
- 6. Small brush
- 7. Dirty water tank

- 8. Detachable brush hook
- 9. Hose
- 10. Large brush
- 11. Detachable hose hook
- 12. Extender tubes
- 13. Window cleaner attachment
- 14. Self-cleaning nozzle

BEFORE FIRST USE

SETTING UP

1. Read all instructions and safety information carefully before first use. Please retain this information for future reference.
2. Remove all packaging material and check parts against the parts list..
3. Check there is no damage to the cord or any visible damage to the unit."
4. Familiarise yourself with the structure of the appliance (see "structure of your appliance" section).



USING YOUR APPLIANCE

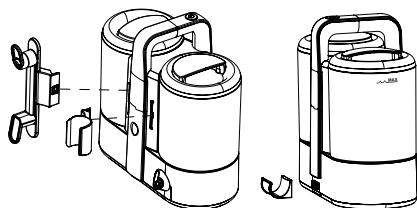
Filling the Clean Water Tank

Open the clean water tank by turning the cover anti-clockwise and pulling the lid off. You can remove the tank entirely by pulling up and away from the unit. Fill the clean water tank with water below the MAX line, and reinstall the tank/lid.

Installing the Detachable hooks

The detachable power cord hook, hose hook, and the detachable brush hook slot into the unit (see image) and allow you to store the unit's hose and power cord in a more convenient and tidy manner.

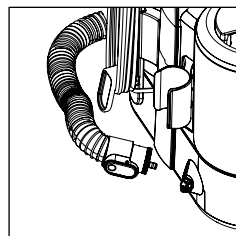
For the handle and brush hooks, simply slot them into place by pressing inwards. For the hose hook, slot it onto the two brackets and then push the hook from right to left to secure it in place.



To remove any of the three hooks, simply reverse the process.

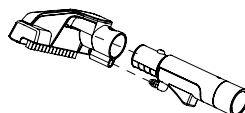
Installing the hose

Install the hose by locating the female end of the hose (the fitting on this end of the hose is shorter and has a button) and push it into the hose fitting on the main unit, ensuring that the protrusion on the hose matches up with the recess on the unit. Once the hose is in place, an audible click will be heard.



Installing attachments

All attachments connect and release from each other via the use of buttons. To connect one attachment to another, simply line up the attachment to the thing you would like to connect it to, and push them together, ensuring that only one side has a button. Once the two attachments are connected properly, the button will be flush and an audible click will be heard. To disconnect one attachment from another, simply press the button and pull the two attachments away from each other.



The two extender tubes may be connected with each other so as to double the length of the unit.

In the case of the self-cleaning nozzle, push the nozzle onto the end of the hose, ensuring that the recess in the nozzle matches up with the protrusion in the hose. To detach the nozzle, press the button that is protruding from the hole in the nozzle and pull apart.

NOTE: Always insert and remove attachments with the unit's power off.

USING YOUR APPLIANCE

1. Select the desired attachments and install them correctly. Ensure that the dirty water tank has been emptied and that the clean water tank is full, and below the MAX line.
2. Plug the unit into the mains and press the On/Off button. The unit's vacuum will be audible.

Using the brush attachments

1. Clip the brushes onto their attachments if you require them.
2. Press the water-spray button on the hose to spray water out of your nozzle of choice on any tough spots or stains.
3. vacuum up the water and brush the unit back and forth over the affected area.
4. If dealing with spills, always pick up the excess liquid before using water or detergent.
5. Push in hard with the brush on stains to suck out dirty water.

Tip: try and tilt the attachment at a reasonable angle, too much or too little will prevent the unit from properly picking up water.

Using the window cleaning attachment

1. Insert the two tubes together to create a long handle. Connect the window cleaning attachment to this, and then connect this to the hose.
2. Press the water-spray button to squirt water onto the window.
3. Press the window cleaning attachment against the window to absorb water.

When finished with the unit, turn it off and empty the dirty water tank.

NOTE: for stubborn stains and dirt, a mild detergent may be added to the clean water tank before use.

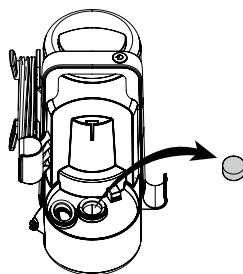
NOTE: If the dirty water tank is full, the unit will automatically stop suction. Empty the dirty water tank and re-install it if this is the case.



CLEANING AND STORAGE

CLEANING THE HOSE

1. Remove any attachments from the hose and place the self-cleaning nozzle onto the hose. Half fill the clean water tank.
2. Simply turn the unit on and hold the water spray button for a minute so that water is cycled through the hose.
3. Remove the self-cleaning nozzle, empty both water tanks and unplug the unit.



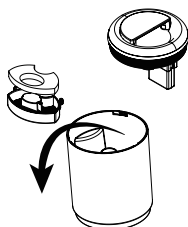
Cleaning attachments

Remove all attachments and wash them under warm water, using a mild detergent for heavy fouling. Let dry completely before using.

Cleaning the dirty water tank

Remove the dirty water tank from the main unit and empty any dirty water.

Remove the cover and filter of the dirty water tank.



4. Clean all parts with warm water only and allow to completely dry before re-installing them.
5. Locate the small foam filter below where the dirty water tank sits, and remove it.
6. Rinse it under the tap and allow to air dry completely (or place near a radiator) before re-installing.

7. When cleaning is complete, reinstall the dirty water tank back onto the main unit.

WARNING! Do not immerse the appliance in water or any other liquid.

TROUBLESHOOTING

PROBLEM	POSSIBLE CAUSE	POSSIBLE SOLUTION
The unit doesn't work after turning on	The unit doesn't work after turning on. The plug is not properly plugged in or the cord is damaged.	Unplug the unit. Inspect the power cable for any damage. If present, consult our hotline. If there is no damage, try a different socket.
Little to no water comes out after pressing the water-spraying button	The spraying system is damaged. The handle or the pump has been damaged	Take out the brush, wash the spray water mouth or consult the service agent via our hotline.
Little to no suction	The machine is off. The dirty water tank is full. The hose is damaged or improperly connected.	Turn on the unit. Empty water from the dirty water tank and replace Inspect the hose for damage and then carefully reinstall.

DISPOSAL OF THE UNIT

Appliances bearing the symbol shown here may not be disposed of in domestic rubbish. You are required to dispose of old electrical and electronic appliances like this separately.

Please visit www.recycle-more.co.uk or www.recyclenow.co.uk for access to information about the recycling of electrical items.

Please visit www.weeeireland.ie for access to information about the recycling of electrical items purchased in Ireland.

The WEEE directive, introduced in August 2006, states that all electrical items must be recycled, rather than taken to landfill.

Please arrange to take this appliance to your local Civic Amenity site for recycling, once it has reached the end of its life.



CUSTOMER SUPPORT

If you have any questions or concerns about your new product, please contact our helpful Customer Support Team:

Spare part replacements and accessories are available to purchase via:



+44 (0) 333 220 6066



www.towerhousewares.co.uk

Please have your Model No. available. This can be found on the front cover of this instruction manual and on the appliance's rating label.



TOWER®

BUILT FOR BETTER SINCE 1912

Thank you!

We hope you enjoy your appliance for many years...

This product is guaranteed for 12 months from the date of original purchase.

If any defect arises due to faulty materials of workmanship, the faulty products must be returned to the place of purchase.

Refund or replacement is at the discretion of the retailer.

THE FOLLOWING CONDITIONS APPLY:

The product must be returned to the retailer with proof of purchase or a receipt.

The product must be installed and used in accordance with the instructions contained in this instruction guide.

It must be used only for domestic purposes.

It does not cover wear and tear, damage, misuse or consumable parts.

Tower has limited liability for incidental or consequential loss or damage.

This guarantee is valid in the UK and Eire only.

The standard one year guarantee is only extended to the maximum available for each particular product upon

registration of the product within 28 days of purchase. If you do not register the product with us within the 28 day period, your product is guaranteed for 1 year only.

To validate your extended warranty, please visit www.towerhousewares.co.uk and register with us online.

Please note that length of extended warranty offered is dependent on product type and that each qualifying product needs to be registered individually in order to extend its warranty past the standard 1 year.

Extended warranty is only valid with proof of purchase or receipt.

Your warranty becomes void should you decide to use non Tower spare parts.

Spare parts can be purchased from www.towerhousewares.co.uk

Or call our Customer Support Team on:
+44 (0) 333 220 6066

